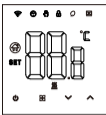


### Series Thermostat User Guide



This thermostat is used for water heating, electric heating, or gas boiler.

### Thermostat User Guide

#### Welcome

Thank you for your trust and support! We have adopted advanced technology and perfect craftsmanship so that your new thermostat will provide you with a suitable temperature environment every day in the future. It makes your life more pleasant and entire and making your living environment more comfortable and healthy.

For detailed instructions on installation and using this thermostat, please read this manual carefully. Please get to touch with a professional to install the thermostat for you. Besides, please install and use this product within the scope of the law.

#### Application

The intelligent digital humidity controller for a floor heating system suitable for room temperature control and household temperature control. It controls the operating status of the floor heating equipment by sensing the comparison between the ambient temperature and the set temperature. While imposing comfort, it achieves the purpose of energy saving.

The digital thermostat adopts microcomputer control technology and has an elegant design, and is easy to use. Moreover, it has manual and automatic functions, programmable functions, and static memory functions.

### Thermostat User Guide

#### Product packaging

Thermostat model: TH1      Serial Number: 1903

Content of packaging: 2PCS      Serial: 19C

Setting time (optional): 19C

1. Backlight: You can adjust the brightness through the mobile phone APP or on the thermostat display.

IR: Infrared sensor and infrared sensor on the ground

GA: Water heating SA;

GB: Electric heating 16A;

GC: Linkage Air Gas boiler 3A

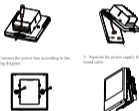
GE: for water heating+for gas boiler

#### Standard Specification

- |                                 |   |
|---------------------------------|---|
| 1. Temperature sensor: 19C      | 2. Temperature accuracy: ±2°F                     |
| 3. Heater control: ON           | 4. Working mode (manual): OFF                     |
| 5. On/Off automatic control: ON | 6. Temperature setting: 59°F/5°C                  |
| 7. Working current: 64mA        | 8. Load current: water heater 2A                  |
| 9. Voltage: 100-240V, 50/60Hz   | 10. Qualified electromagnetic EM interference: 50 |

### Thermostat User Guide

#### Mounting steps



1. Connect the power line according to the wiring diagram.

2. Separate the power supply from the control board side.

3. Connect the power supply into the back of the thermostat.

4. Connect the power lead to the control board line, and align the handle at 90 degrees to complete the installation.

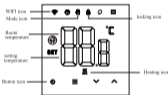
### Thermostat User Guide

#### Time programming instructions

	Options	Item	Time	Time Adjustment	Default	Temperature Adjustment
Working days	1	🕒	00:00	↑	20°C	↑
	2	🕒	08:00	↑	16°C	↑
	3	🕒	11:30	↑	16°C	↑
	4	🕒	12:30	↑	16°C	↑
	5	🕒	17:00	↑	20°C	↑
	6	🕒	22:00	↑	16°C	↑
Holidays	1	🕒	00:00	↓	20°C	↓
	2	🕒	23:00	↓	16°C	↓

### Thermostat User Guide

#### Icon description



WiFi icon

Room temperature

Setting temperature

Return icon

locking icon

Heating icon

### Thermostat User Guide

#### About WIFI connection

Before using the WIFI temperature controller for the first time, you must set the WIFI user number and configuration via your smartphone or tablet, which will allow communication between your controlled device.

WIFI connection: When the thermostat is turned on, press and hold the up button for 5 seconds, the WIFI icon flashes on the thermostat display, and the thermostat enters the code matching state.

WIFI connection: (For both thermostat, please scan on the phone's Bluetooth APP download)

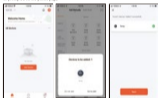
Search for "Tuya Smart" in each APP market or scan the following QR code to download this software:



### Thermostat User Guide

#### 3. Add device

1. If Bluetooth connection: Turn on the mobile phone's Bluetooth, turn the device on, and enter the Tuya APP. Click "Add Device" or "+" on the top right of the APP homepage, and enter the ID number. It will prompt that the device is to be added (Figure 2), and follow the prompts. 2. "Automatic discovery": Search for devices (Figure 3), and add devices as prompted on the phone page.



### Thermostat User Guide

#### Advanced Option Setting

In the thermostat user manual, you can find the advanced option setting.

Please click on the device option, then press the thermostat to set the advanced option setting.

Item	Item Name	Item Description
01	Temperature sensor	Temperature sensor type: 19C
02	Temperature accuracy	Temperature accuracy: ±2°F
03	Heater control	Heater control: ON
04	Working mode (manual)	Working mode (manual): OFF
05	Temperature setting	Temperature setting: 59°F/5°C
06	Working current	Working current: 64mA
07	Voltage	Voltage: 100-240V, 50/60Hz
08	Load current	Load current: water heater 2A
09	Qualified electromagnetic interference	Qualified electromagnetic interference: 50
10	Temperature adjustment	Temperature adjustment: 1°C
11	Temperature adjustment	Temperature adjustment: 1°C
12	Temperature adjustment	Temperature adjustment: 1°C
13	Temperature adjustment	Temperature adjustment: 1°C

### Thermostat User Guide

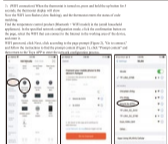
#### 2. Register an account

If you do not have an APP account, you can choose to register or log in via SMS verification code (Click "Create New Account" to enter the privacy policy page of Tuya Smart Platform. After clicking Agree, you will forwardly pass the registration page of your mobile phone number.



### Thermostat User Guide

#### 4. Thermostat APP interface display



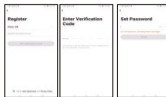
### Thermostat User Guide

#### 4. Thermostat APP interface display



### Thermostat User Guide

The system automatically determines the current country/region, or you can manually select the country/region, enter your phone number or email address, and click "Get the Verification Code." Enter the received verification code. Then enter the password. Click "Trust" to register successfully.



### Thermostat User Guide

Before use, the APP for the network configuration process is shown in Figure 1, and the network configuration successfully displays the interface shown in Figure 2. The device's name will successfully be recorded and added to the installed and the user's location can be checked.

