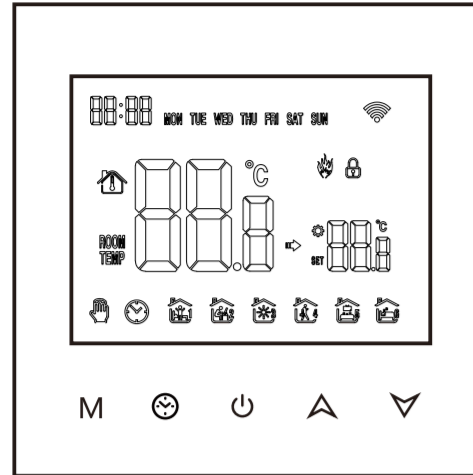


WT-100 Series Thermostat User Guide



This thermostat is used for water heating, electric heating, or gas boiler.

01

Welcome

Thank you for your trust and support! We have adopted advanced technology and perfect craftsmanship so that your new thermostat will provide you with a suitable temperature environment every day in the future. It makes your life more pleasant and artistic and making your living environment more fashionable aesthetic.

For detailed instructions on installing and using this thermostat, please read this manual carefully. Please get in touch with a professional to install the thermostat for you. Besides, please install and use this product within the scope of the law.

Application

The intelligent digital humidity controller is a floor heating system suitable for room temperature control and household temperature control. It controls the operating status of the floor heating equipment by sensing the comparison between the ambient temperature and the set temperature. While improving comfort, it achieves the purpose of energy saving.

The digital thermostat adopts microcomputer control technology and has an elegant design, and is easy to use. Moreover, it has manual and automatic functions, programmable functions, and state memory functions.

02

Product packaging

Thermostat host 1 PCS Guide/manual 1PCS
Certificate of conformity 2PCS screw 1PC
Sensing line (optional) 1PCS

Product parameters

GA: Water heating 3A;
GB: Electric heating 16A
GC: Linkage; M: Gas boiler 3A

L: Backlight (You can adjust the brightness through the mobile phone APP or turn off the backlight)
R2: Internal sensor and external sensor on the ground

Electrical Specifications:

- Temperature 2. Temperature 3. Display screen: LCD
- Sensor: NTC accuracy: $\pm 1^{\circ}\text{C}$
- Working environment: $-5\sim 50^{\circ}\text{C}$ power: $< 1\text{W}$ setting: $5\sim 60^{\circ}\text{C}$
- Self-consumption 6. Temperature sensor environment: $-5\sim 50^{\circ}\text{C}$ power: $< 1\text{W}$ setting: $5\sim 60^{\circ}\text{C}$
- Display range: 8. Load current: water heater 3A 0-51 $^{\circ}\text{C}$ (resistive) electric heater 16A (resistive) 02
- Voltage: AC95-220V, 50/60Hz
- Electrical safety standards: GB14536.1-2008

09

About WIFI connection

Before using the WIFI temperature controller for the first time, you must set the WIFI value number and configuration via your smartphone or tablet, which will allow communication between your connected devices.

WIFI connection: When the thermostat is turned on, press and hold the up button for 5 seconds, the WIFI icon flashes on the thermostat display, and the thermostat enters the code matching state.

WIFI connection: Bluetooth thermostat, please turn on the phone's Bluetooth

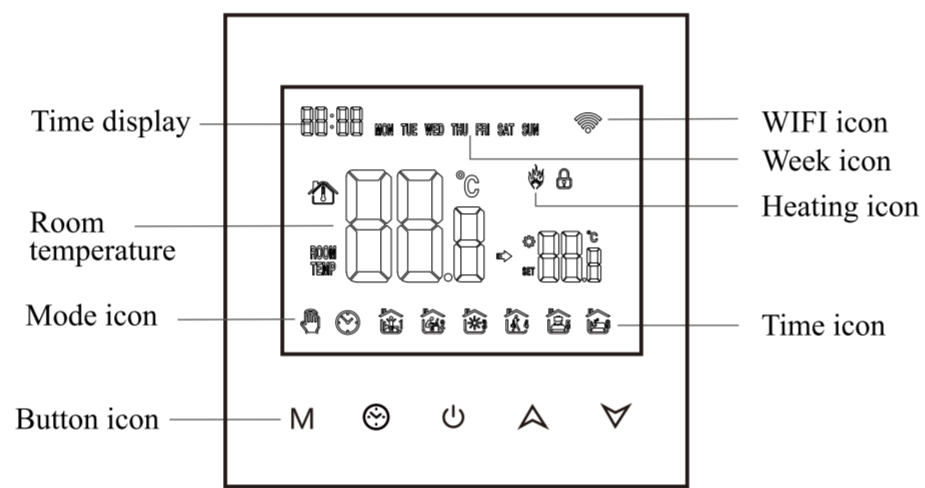
1. APP download

Search for "Tuya Smart" in each APP market or scan the following QR code to download this software:



09

Icon description

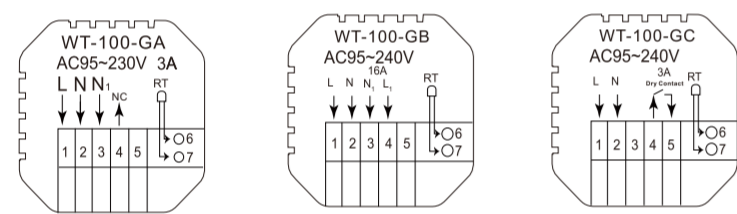


0

User Instructions

- Read this manual carefully. A general operation may damage the product or cause a dangerous situation.
- The installation personnel must be well-trained and experienced service technicians.
- After the installation is complete, please close this manual carefully and operate this product following the user guide. Note: There is a risk of electric shock or equipment damage.

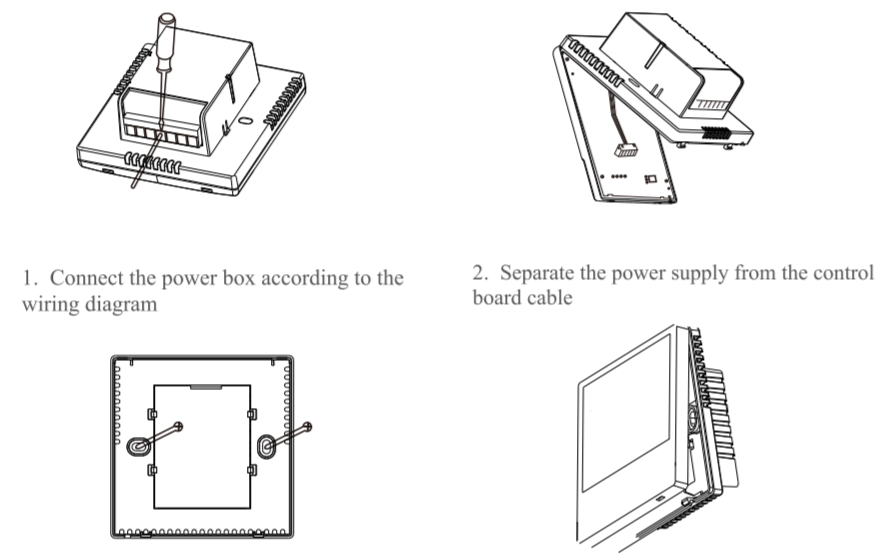
Wiring Diagram



GA: Water heating GB: Electric heating GC: Gas boiler heating

03

Mounting steps



04

Time programming instructions

Long press the M key to enter the programming setting, short press the M key to switch options, press the up or down key to adjust the parameters of each option, and press the key to exit and save mode.

key	Options	Icon	Time	Time Adjustment	Defaults	Temperature adjustment
☺	Working days	1	06:00	^	20 $^{\circ}\text{C}$	^
		2	08:00		16 $^{\circ}\text{C}$	
		3	11:30		16 $^{\circ}\text{C}$	
		4	12:30		16 $^{\circ}\text{C}$	
		5	17:00		22 $^{\circ}\text{C}$	
		6	22:00		16 $^{\circ}\text{C}$	
☹	Holidays	1	08:00	v	22 $^{\circ}\text{C}$	v
		2	23:00		16 $^{\circ}\text{C}$	

06

Advanced Option Setting

In the shutdown state, press the M key and key. Press for 5 seconds to enter the advanced option setting

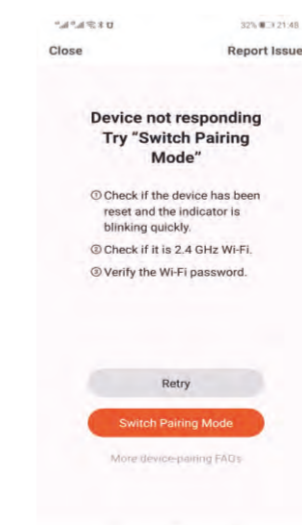
Press the M key to enter the next option, then press the up and down key to adjust options, and press the key to exit the advanced option setting mode.

01	Temperature compensation	The default value of the calibration room temperature is 2 degrees Celsius. Press the up or down key to adjust the range from 0 $^{\circ}\text{C}$ to 10 $^{\circ}\text{C}$.
02	Sensor selection	The temperature compensation default is PN. Press the up key or the down key to adjust it respectively as IN internal sensor selection. ALL means all internal sensors are selected. ALL means external sensors are not.
03	Limit temperature value modification	The limit temperature value is 13 $^{\circ}\text{C}$ by default. Press the up or down key to adjust the range from 7 $^{\circ}\text{C}$ to 40 $^{\circ}\text{C}$.
04	Temperature difference setting	The default setting temperature difference start is 1 $^{\circ}\text{C}$. Press the up or down key to adjust the range from 0.5 to 10 $^{\circ}\text{C}$.
05	Antifreeze function	Set the antifreeze function on/off by default; press the up key to turn on the antifreeze function.
06	Rest day selection and heating week programming	The default setting of rest days is double rest; press the up or down key respectively to be double rest (F), single-day rest (L), and no rest (1-7).
07	Main and auxiliary reverse selection (optional)	Set the main and auxiliary reverse to 0 by default. Press the up or down key to adjust to turn on the main and additional reverse functions, and 02 to indicate the auxiliary reverse.
08	Protective linkage output delay time (optional)	Set protective linkage delay time as 0 by default. Press the up or down key to adjust the range of 0.5 minutes.
09	Set temperature upper limit	Set the upper limit of the temperature to 40 $^{\circ}\text{C}$; press the up or down key to adjust the range from 15 $^{\circ}\text{C}$ to 95 $^{\circ}\text{C}$.
10	Reset	Set to restore factory settings. The default display is "1"; press the up key to display "1" and then press the enter key to restore the factory settings.

08

If the network configuration fails, the APP will display the page as shown in the figure below, and you can choose to add it again or view the help.

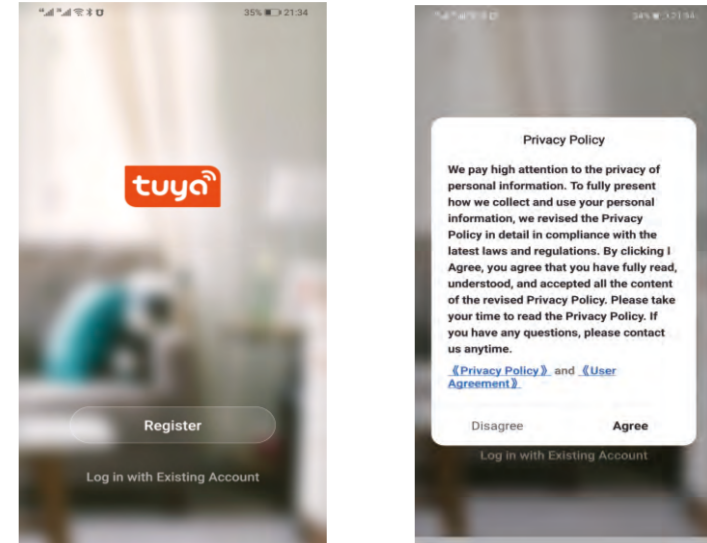
Note: Please confirm whether the thermostat enters the code matching state if the connection fails.



15

2. Register an account

If you do not have an APP account, you can choose to register or log in via SMS verification code. Click "Create New Account" to enter the privacy policy page of Tuya Smart Platform. After clicking Agree, you will formally join the registration page of your mobile phone number.

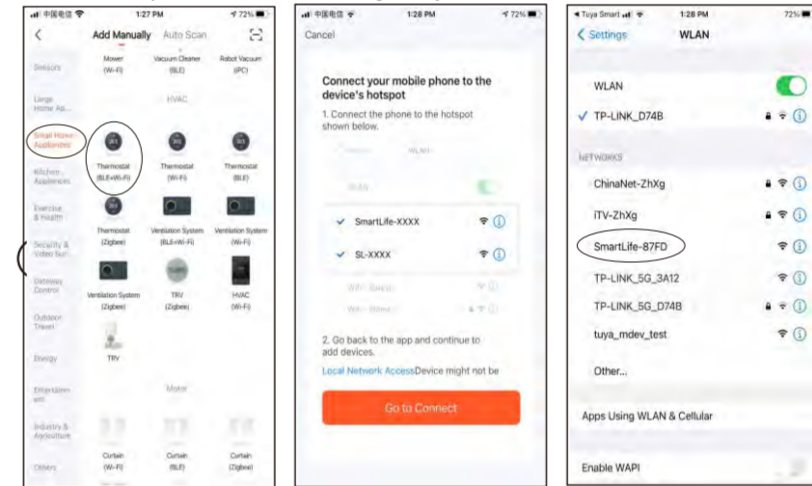


10

3. (WIFI connection) When the thermostat is turned on, press and hold the up button for 5 seconds, the thermostat display will show Now the WIFI icon flashes (slow flashing), and the thermostat enters the status of code matching.

Find the temperature control product (Bluetooth + WIFI mode) in the (small household appliances). In the specified network configuration mode, click the confirmation button on the page, select the WIFI that can connect to the Internet in the working area of the device, and enter it.

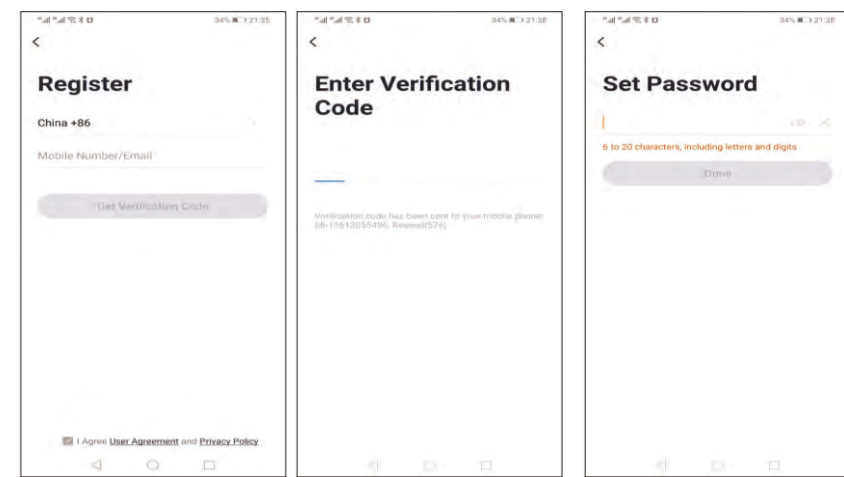
WIFI password, click Next, click according to the page prompt (Figure 2), "Go to connect," and follow the instructions to find the prompt content (Figure 3), click "Prompt content" and then return to the Tuya APP to enter the network configuration process.



13

The system automatically determines the current country/region, or you can manually select the country/region, enter your phone number or email address, and click "Get the Verification Code."

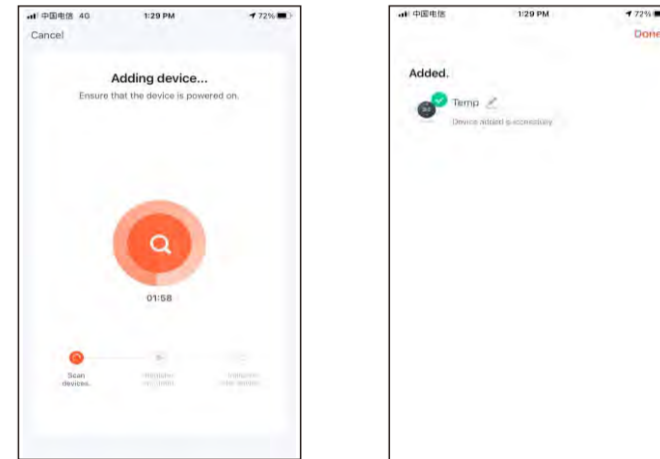
Enter the received verification code. Then enter the password. Click "Finish" to register successfully.



11

In that case, the APP for the network configuration process is shown in Figure 1, and the network configuration successfully displays the interface shown in

Figure 2. The device's name with successful network configuration can be modified, and the room's location can also be selected.



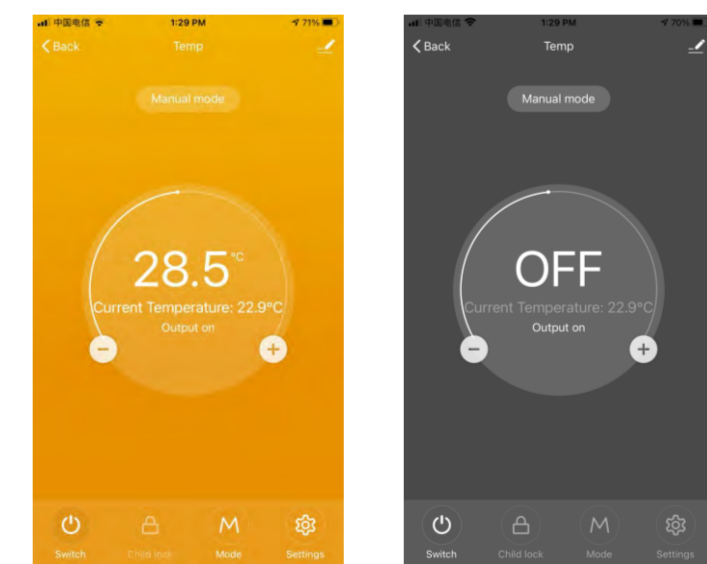
14

Operation Guide

- Power on/off: press the key to turn on/off the thermostat.
- Press the M key to switch between manual and automatic modes.
- In the automatic mode, press the key or key to adjust the temperature, and it will enter the automatic mode, which only runs for a while.
- Press the key to enter the clock setting, press the mode key M to switch the setting options, and press the up and down keys to adjust each parameter value.
- Simultaneously press and hold the up and down keys for 5 seconds to add or cancel the child lock.
- WIFI link: When the thermostat is turned on, press and hold the up button for eight or five seconds, the WIFI icon flashes on the thermostat display, and the thermostat enters the code matching state.

06

4. Thermostat APP interface display



16